

# Magic Valley ATV Riders

April 2023



**We are a family organization and welcome social interactions among all our members. Riders of all ages are welcome to join us. We are a growing, vibrant, and active organization! – Photo: October 2, 2021, YE 100 Ride.**

## Message from the President

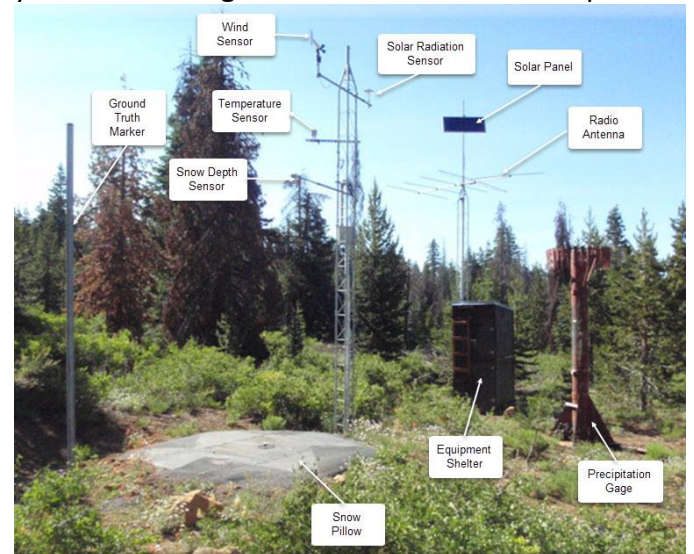
Over the last few weeks as I pondered what to write about this month since, I figured I would write about what we are all wishing would go away. Snow.

Yup, that white stuff that fell on Friday, and Saturday, and even Sunday (the time I'm writing this).

I was curious how the snow levels are looking around the area, so I went to the SnoTel data. For those that don't know what SnoTel is, The SNOwpackTElemetryNetwork (SNOTEL), which is an automated system of snowpack and related climate sensors operated by the Natural Resources Conservation Service (NRCS) of the United States Department of Agriculture in the Western United States, collects snow data that include snow water equivalent, accumulated precipitation, and air temperature. In addition, some sites include a measure of snow depth, soil moisture and temperature, wind speed, solar radiation, humidity, and atmospheric pressure. These data are used to forecast yearly water supplies, predict floods, and for general climate research. SNOTEL snow course data and products are available on this site.

We have two SnoTel sites in the South Hills, one in the Magic Mountain area, and one in the Bostetter area right off the 532\First Fork road.

Here some photos of the equipment they use to measure the snowpack. The first is off their website. If you click on the photo it will load up the page so you can see a high resolution version of the photo.



As you can see, some of the main sensors consist of a snow pillow weighing the snow in order to tell how much water is in it and the snow depth sensor measures the depth obviously. Once you know how deep it is and how much it weighs you then know how much water is in the snow. According to the website, the depth gauge is accurate to half an inch and the water content gauge is accurate to a tenth of an inch!

They also have a precipitation gauge, wind sensor, equipment building, and a few other things.

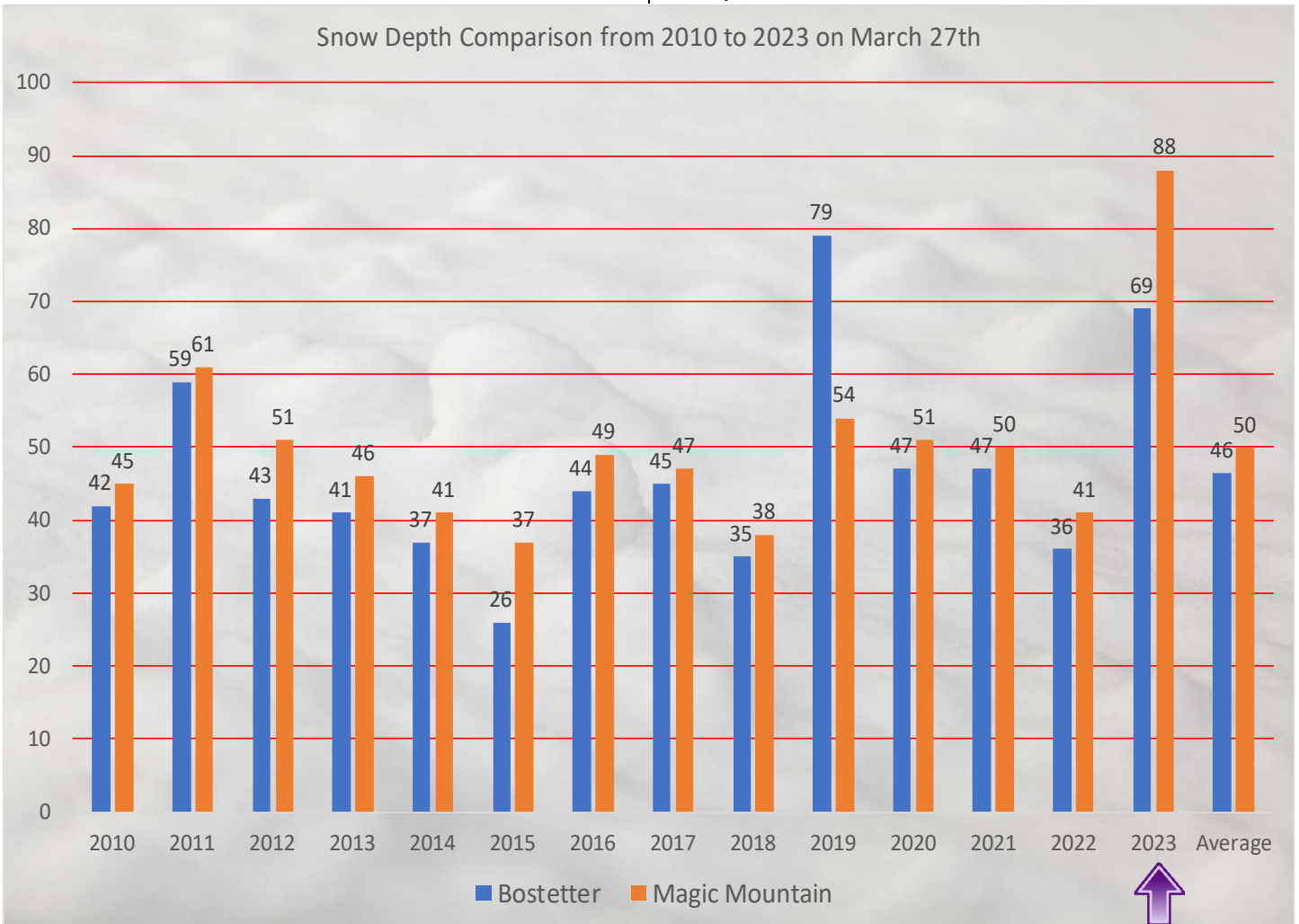
The following photos are from the Bostetter station one of my rides a few years ago. If my memory is correct, there are three snow pillows but only one has a depth gauge above it.



As for the Magic Mountain station, I've never been to it since I don't know the exact coordinates for it, but I am assuming that it is accessible only from the Magic Mountain ski resort.

Now that we have some basics down, let's talk about how these two sites are going to tell us when we can go riding in the South Hills again. Well, it is not going to be any time soon-unless it quits snowing and the sun starts shining soon.

Check out this nifty graph I created the other day:



As you can see, we have a LOT more snow at both sites compared to what we have had in the last few years. Right now, with the snow we have had in the last few days, Bostetter has 77 inches of snow and Magic Mountain has 89 inches of snow. The thirteen year average is 46 and 50 inches respectively.

As you can tell, we probably won't be in the South Hills any time soon.

Now a few other things. At the board meeting last week we renewed our membership in the Idaho ATV Association. Their web address is <https://idahostateatv.org/> and we encourage you look at their website.

We voted to not participate in Meetup this year. Although it would have only cost us about \$50 for the year, we have not had enough members participate in it over the last few years. We will reconsider joining next year if we have enough interest.

Our current membership sits at 90 paid memberships with 176 members. We still have some folks down south and we anticipate our membership going up when they return from the land of sun and sand.

Ron mentioned that he has 9 camping spots free at Mackay, so we will leave the Mackay campout and ride writeup in this month's newsletter.

We committed to help the Snake River Canyon Park with their annual spring cleanup on May 13<sup>th</sup>. More information will be available once they let us know what time to meet on that day. We assume it will be the regular staging area right off the highway as you cross the Perrine Bridge.

The board voted to donate \$300 to buy gloves for the ATV safety fair (more info about that in another article).

We also voted on something else, which as one of our former presidents would say, is HUGE! No, I will not announce it here. When will we? Well, at the April meeting. So, if you want to find out what this HUGE announcement is, you will have to come to the meeting in April or wait until the May newsletter.

We encourage everyone to PLEASE RSVP for the April meeting at Action Cycles and Sleds. Go to

<https://www.mvatvr.org/meetings.html> and click the RSVP link.

Last month we had a really large turnout at Adventure and although they barely had enough food for us, their employees did not get to eat. Please RSVP by Sunday, April 9<sup>th</sup> at midnight so we can give them a somewhat accurate number of people to prepare dinner for.

We set the private Facebook group to "hidden" due to the large number of requests to join the group from non-members. I re-uploaded everyone's email address to the group so if you have not joined yet, go the club website, click Members, and then the Facebook link and it should link you to our group. If you have any questions, or have trouble joining, feel free to call me.

And last, after a conversation with Jerry Kreigh today, he is still planning on taking us to Lake Channel this Saturday. Click the blue link in the upcoming ride area of the article for all the details!

Now, for a few filler items to fill in the pages. In March we installed a turn signal kit and a new tie rod book on Kris's RZR. My rear shocks are here after being rebuilt. I have been too depressed with the crappy weather to install them, but I guess I better do it soon so I can go with Jerry next Saturday. I also helped a friend with his new Maverick Trail – maybe he will join the club!

And last, it quit snowing outside...

Aaron Larson – President



# Club Meeting Schedule

Our next meeting will be held on Wednesday, April 12<sup>th</sup> at:



This month we will have the pleasure of hearing from the Blue Ribbon Coalition!



## BLUERIBBON COALITION

Dinner will start at 6:00 p.m. and the meeting will start as soon as everyone has their dinner.

We will start the meeting by introducing our speaker and we will give them 30-45 minutes to speak with us and answer any questions you have for them.

After they are done we will have a **HUGE** announcement as part of our regular agenda items. We may need go very quickly through the rest of the agenda in order to finish by 8:00 p.m.

We do ask for a couple favors though.

1. **[RSVP by clicking here](#)**
2. Please do not arrive earlier than 5:30 to allow them get ready for the meeting and to allow their customers to complete their business.
3. Please bring a chair and water if you like.
4. Bring your checkbook/money!

The meetings for the remainder of 2023 are as follows:

- May 10 –Let’s Ride\Rupert
- June-August – No meetings
- Sept 12 – Picnic in Kimberly
- Oct 11 – Young Powersports\Burley
- Nov 8 – Idaho Pizza\Twin
- Dec ? – Idaho Pizza\Twin

At a regular club meeting, dinner starts at 6:00 PM and the meeting starts at 7:00 PM or a little sooner if we finish eating. Meetings usually conclude at 8:00 PM.

---

## UTV Safety Donation

I would like to thank the board for donating \$300 to buy gloves for the kids who participate in the UTV Safe Kids Training class in a few months. I would also like to thank Gary Aufderheide for donating another \$100 of his own money to help with their great cause.

Last year we had about fifty kids participate in learning how to operate a UTV in a safe and courteous manner. We need to raise another \$150 to provide each child a pair of gloves. If you would be interested in donating to the future of our next generation of safe UTV riders, please bring a donation to either of our next two club meetings at Action Cycles and Sleds or Let’s Ride and I’ll be glad to take it and add to the funding for the gloves.

I know it would be much appreciated by these little guys and gals as they learn to be good riders.

Robert Leitch, 208-539-6066

Editors note – Challenge accepted. I would hate to be the last child in line and be the only one to not get a pair of gloves.....

---

## March Meeting Report

WE would like to thank the Adventure Motorsports staff for hosting our March meeting.

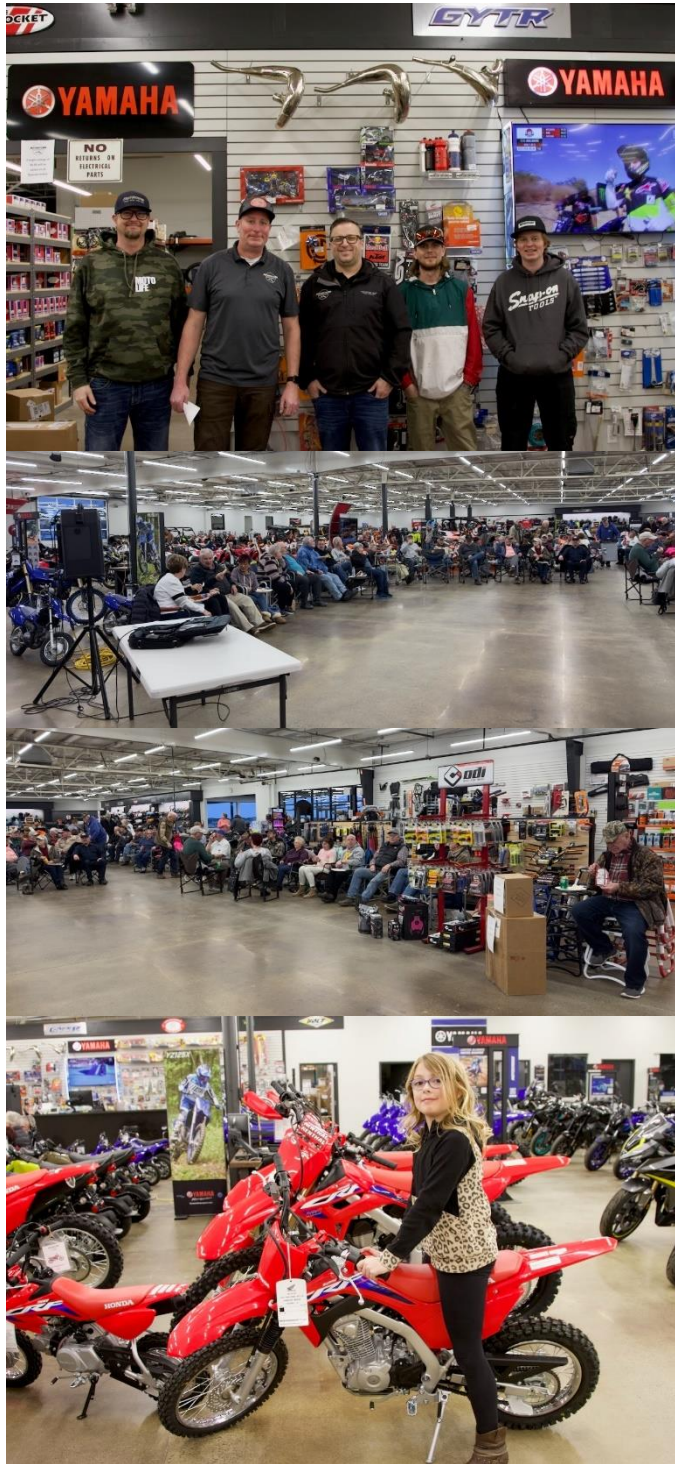
We arrived to find that Jeramiah and his staff had prepared a nice open area for the meeting. As everyone arrived they toured the nice large building and looked at all the machines, accessories, and clothes that they had available.

Heide, Jeramiah’s wife, and her assistants, served their delicious sloppy joe dinner with chips, rice crispy treats, and pop and water for dinner. We had nearly seventy people in attendance and although there was barely enough food for the

members, there was not enough for their employees.

After a quick introduction, Jeremiah was introduced, and he gave us another spectacular presentation on general maintenance that we can do on our machines.

Dixie Best – Event coordinator



## Upcoming Rides & Events

Here are the rides and campouts that are penciled onto the calendar. Please watch the calendar on the website for up-to-date information.

April 8 - [Lake Channel](#) – Jerry Kreigh

May 13<sup>th</sup> – Snake River Canyon Park cleanup

We will update the calendar on the website with more details on rides and other events as information becomes available.

Linda Laudert – Ride Coordinator

## BLM & South Hills Closure Extended

The Bureau of Land Management Burley Field Office will extend the seasonal motorized travel closure in the South Hills area, south of Twin Falls, to Saturday, April 15, 2023. Roads in the area are still snow covered and wintering deer herds are hanging in the lower elevation areas, needing additional protection. The area is still open to the public for non-motorized use.

“The amount of snowpack in the South Hills area makes it necessary for us to extend this closure,” said BLM Burley Field Manager Ken Crane. “The roads are just not ready for travel yet, and it is a crucial time to limit disturbance for wintering herds of deer living on their fat reserves.”

Signs are posted in the area to notify the public of the temporary closure to the following roads, as well as any two-tracks or trails tied to these roads:

- Dry Creek
- Dry Gulch
- Cherry Spring
- Indian Springs (closure begins 1.5 miles south of Foothills Road)
- North Cottonwood Creek.

The seasonal closure applies to all motorized vehicles (including e-bikes), except those specifically authorized to access the area. Motorized travel authorization is provided for search and rescue operations, emergency medical services and law enforcement personnel, administratively approved

actions, such as livestock grazing, access to private lands and resource monitoring or research studies. Violating this closure may result in a fine up to \$1000, or up to 12 months imprisonment, according to 43 CFR 8364.1.

For more information regarding this annual seasonal road closure, or nearby areas available for motorized travel throughout the winter, please contact Dennis Thompson, BLM Burley outdoor recreation planner, at 208-677-6600. To learn more about the South Hills, visit <https://www.blm.gov/visit/south-hills>.

BLM press release

## UTV Show

On Saturday morning I headed to the UTV show in Caldwell with Bill Mefford and another friend. After nearly three hours on the road, we pulled into the parking lot full of vehicles and paid our \$10 entrance fee.

Inside we found a large number of people checking out the booths. As we wandered around, we found that, as I suspected, the show catered to those that have the larger machines. Not one 50" model in sight.

We found booths hosted by Yamkum Ropes, Razorback Offroad, and Idaho Parks and Rec. Most of the rest of the booths were folks selling body wraps, tires and wheels, engine and clutch mods, and assorted accessories. Most of the machines they had on display had their accessories installed. We found that a large number of them are set up to ride the sand dunes which we don't do a whole lot of here.

After spending about 45 minutes at the show, we hit Texas Roadhouse for lunch, followed by a visit to about six gun shops before visiting Cabela's and heading home.

Would I go back next year? Well, given that this year was the first year this expo has taken place, probably so. If all else, just the road trip, lunch, and hanging out with friends would still make it worth it.

Aaron Larson



## Mackay Campout and Ride

Ron Mothershead has once again volunteered to take us all to Mackay this July from the 27<sup>th</sup> to August 1<sup>st</sup>.

We will be staying at the Mackay Tourist Park. Ron has reserved the entire park which consists of 24 individual sites. One RV per site. Dry camping only.

Cost will be determined by how many sites we fill. Park rent is \$200 divided by the number of sites used. You can pay Ron at the event once we

have a count on the number of sites used. In past years, the cost has been \$9 to \$12 total for all five nights.

Reserve your spot by contacting Ron Mothershead - call or text (208) 731-4404 or email at ron.mothershead12@gmail.com. Reservations will be accepted for members of MVATVR in the order received.

Check-in is after 10:00 a.m. Thursday July 27th. Check out is before 10:00 a.m. Tuesday August 1st.

More information and agenda in an upcoming newsletter.

Ron Mothershead

---

## Lava Ridge Update

**A**t the last meeting of the subcommittee, we finalized our findings and came to a unanimous decision to support alternative A (no action). We forwarded our decision to the Regional Advisory Committee (RAC). They supported our decision and members of the RAC and subcommittee are sending signed recommendations to the BLM. Although, this may stop the Lava Ridge project, there are ten more projects down the line, which will have to be dealt with. Next will likely be Salmon Falls and Taurus Projects.

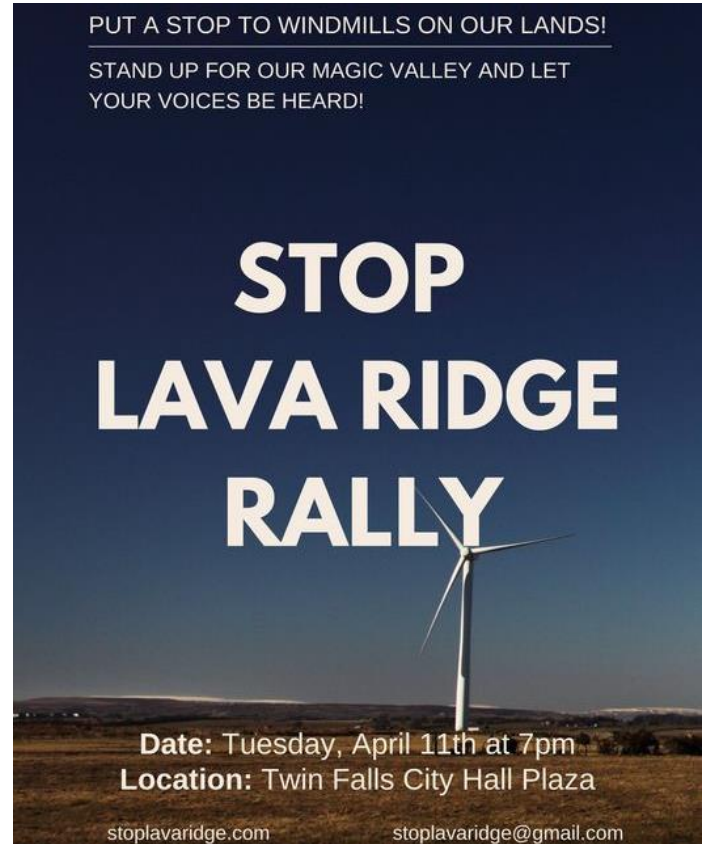
On April 6 at 5:30 PM, the Boards of County Commissioners from Jerome, Lincoln, Twin Falls, Minidoka and Gooding will meet at Minidoka National site for a signing ceremony on a joint resolution between the counties in opposition to wind farms built on public lands.

There will also be a "Stop Lava Ridge Rally" on Tuesday, April 11 at 7PM at Twin Falls City Hall Plaza. Don't forget to leave your comments on Lava Ridge with the BLM until April 20. Our Federal and State politicians are also in opposition to wind projects on public lands.

Ted MacNeil

---

Why Was The Wind Turbine Decommissioned? It Took a Turn For The Worse.....



---

## Thinking of You

**E**veryone that is ill, recovering from being ill, family that is ill, lost a friend or family member, or otherwise needs extra support.

- Linda Aufderheide – Hospital stay
- Penni Keck – Hospital stay

---

## New Members

**W**e would like to welcome the following new members to the club: None this month.

Linda Stimpson

---

## Membership Dues!

**D**ues are \$25 for a single person and \$30 for a family.

Please mail your payment to PO Box 0767, Twin Falls, ID 83303, bring your payment to the next meeting.

Linda Stimpson

## Flags & Hats

If you would like to buy a brand-new orange MVATVR flag for your ATV/UTV, there are still a few available. They are \$20 each



We also have American flags printed on the same material the club flags are printed on. They are also \$20 each.

Hats are also available for \$17 each!



Call Brad Stimpson (208-308-8526) to purchase them or see him at the club meetings!

## Club Logos

If anyone wants to have the club logo printed/embroidered on a t-shirt, jacket, etc., [Quick Draw Embroidery & Screen-printing](#) has our logo on file.

You can buy the shirt/jacket/hat from them, or, bring your own. The price is reasonable and depends on how large you want the logo to be.

They are located at 3790 N. 3386 E. in Kimberly. 208-735-8804.

## The Fine Print

We fully understand that ATV activities involve risks and dangers of serious injury up to and including death. I fully accept and assume all such risks and all responsibility for losses, costs and damages I may incur as a result of my participation in the activity. Rides are open to current MVATVR members and invited guests.



Thank You Dealers for Supporting the Magic Valley ATV Riders – In the order of meetings this year.



Twin Falls, Idaho  
2540 Addison Avenue East, Twin Falls,  
ID 83301 – 208.736.8118  
[www.actioncyclesnsleds.com](http://www.actioncyclesnsleds.com)



270 ID-24, Rupert, ID 83350 -  
208.678.3858  
[www.letsride-idaho.com](http://www.letsride-idaho.com)



333 Overland Avenue, Burley, Idaho  
83318 - 208.243.8814  
[youngpowersports.com](http://youngpowersports.com)



2469 Kimberly Rd, Twin Falls, ID 83301  
- 208.733.5072  
<http://www.adventuretf.com>



# Trail Difficulty Guide

**Level 1 - Beginner:** Gravel or dirt surfaces that are relatively flat and wide. Generally wide enough for an ATV to pass a full-sized vehicle. May be dusty but are relatively smooth with no rocks or roots protruding more than three inches above the surface. Ride distance will be short, speeds very slow.

**Level 2 - Advanced Beginner:** Mild ups and downs, some narrow, mild rock, mostly roads and jeep trails, minor off camber. Two-wheel drive ok.

**Level 3 - Intermediate:** Loose gravel, sandy, rocky or rutty surface. May have short sections that are narrow. Can have blind turns, switchbacks, steep or roller coaster grades, some off-camber side hills, minor drop-offs, ruts and frequent changes in riding surfaces. Occasional obstacles may strike the frame. Four-wheel drive may be needed depending on conditions. Pace of ride will be a little faster, distances and length of ride will be longer.

**Level 4 - Advanced Intermediate:** Rocky surfaces, sharp turns, switchbacks, steep grades, narrow passages, low overhangs, ledges and large rocks. Can be slippery and muddy when wet. May have tree stumps, limbs or other debris. Machines with low ground clearance may strike or high center on obstacles. Four-wheel drive highly recommended.

**Level 5 - Expert:** Very rocky, steep, off camber, high water crossings, large ruts. Large obstacles in trails, narrow with big drop offs. Four-wheel drive required, may need winch.



## Club Rules

The Magic Valley ATV Riders (MVATVR), Inc. would appreciate you being considerate of others and observing the following rules/guidelines while participating in club activities.



Obviously, any actions that are unlawful or unsafe are prohibited.

1. Pets should be kept on a leash of no longer than 6 feet during any rides, campouts or other MVATVR events. Please be a responsible pet owner and respect the rights of others.

2. Idaho State Law states that being under the influence and/or consuming alcohol or illegal drugs while operating an OHV is illegal and therefore will not be tolerated by MVATVR, Inc.

3. Generator use should be with consideration for others in camp and a recommended quiet time from 10:00 PM to 6:00 AM needs to be observed.

4. By operating your machine in a safe responsible manner, waiting at intersections and corners, you can insure that fellow riders will not be left behind and everyone will have an enjoyable ride.

---

## Board of Directors

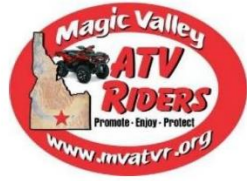
- Aaron Larson ..... President\Newsletter\Website  
208-312-4867 ..... [aaron@atlcomputing.com](mailto:aaron@atlcomputing.com)
  - Robert Leitch ..... Vice President  
208-539-6066 ..... [rleitch68@gmail.com](mailto:rleitch68@gmail.com)
  - Linda Stimpson ..... Treasurer & Memberships  
208-308-5350 ..... [treasurer@mvatvr.org](mailto:treasurer@mvatvr.org)
  - Linda Laudert ..... Ride Co-Ordinator & Secretary  
208-316-1810 ..... [ls\\_laudert@msn.com](mailto:ls_laudert@msn.com)
  - Dixie Best ..... Event Coordinator  
208-308-6418 ..... [dixiebest750@icloud.com](mailto:dixiebest750@icloud.com)
  - Shawn Applewhite ..... Board Member  
208-539-0863 ..... [scapplewhite@gmail.com](mailto:scapplewhite@gmail.com)
  - Gary Aufderheide ..... Board Member  
208-731-4109 ..... [garya2adfndr@gmail.com](mailto:garya2adfndr@gmail.com)
  - Ted MacNeil ..... Board Member  
208-293-6349 ..... [tcmacneil@hotmail.com](mailto:tcmacneil@hotmail.com)
  - Ron Mothershead ..... Board Member  
208-731-4404 .. [ron.mothershead12@gmail.com](mailto:ron.mothershead12@gmail.com)
  - Brad Stimpson ..... Board Member  
208-308-8526 .....
-



Magic Valley ATV Riders, INC. (MVATVR)

PO Box 0767, Twin Falls, ID 83301

Application for Membership



PLEASE PRINT ALL ENTRIES

Spouse 1 Name: \_\_\_\_\_ Spouse 2 First Name (and last if different): \_\_\_\_\_

Mailing Address: \_\_\_\_\_ City, State Zip Code: \_\_\_\_\_ Total Family Members: \_\_\_\_\_

Home Phone: \_\_\_\_\_ Spouse 1 Cell: \_\_\_\_\_ Spouse 2 Cell: \_\_\_\_\_

Spouse 1 Email: \_\_\_\_\_ Spouse 2 Email: \_\_\_\_\_

If you have no email address your club newsletter will be mailed to you via USPS.

Type of membership. Select One:  New  Yearly Renewal

Membership year is January to December. New memberships received after July 31st will be half rate and after November 1st will be credited for next year. Your email address will be taken off the mailing list as February 1st of the new year if dues are not paid current.

Please select one:  Individual \$25.00 per year  Spouse/Family @30.00 per year

Photo Release: I / We grant MVATVR or its representatives to take photographs of me / us in conjunction with club activities. I / we agree that MVATVR may use such photographs of me / us with or without my / our name and for any lawful purpose, including for example such purposes as publicity, illustration, advertising, and Web content. If the listing of my / our name is protected by password, my / our phone and email may also be listed with or without my / our pictures.

Please initial: \_\_\_\_\_ Yes, I agree \_\_\_\_\_ No, I don't agree

**READ CAREFULLY BEFORE SIGNING**  
**ACKNOWLEDGMENT OF RISK / HOLD HARMLESS AGREEMENT**

I / We recognize that riding an ATV is a hazardous activity that can result in serious personal injury or death. I / We accept the risks inherent to riding with a group including, but not limited to, obstacles on and off the roads and trails, rapidly changing weather, limited visibility, variation of slope and steepness on and off the trails, surface or sub-surface conditions on and off the trails and roads, collisions with other ATVs including other riders, and collisions with devices used to mark the boundary of trails or roads.

In consideration of my / our participation in the events and rides of the Magic Valley ATV Riders, Inc., and related club rides/events, I / we hereby release and agree to hold harmless the Magic Valley ATV Riders, Inc., its volunteers, officers, directors and agents, and all club members of the Magic Valley ATV Riders, Inc., and their volunteers, officers, directors and agents from all claims and demands related to my / our participation in rides and events organized, sponsored, supported and/or promoted by Magic Valley ATV Riders, Inc. and/or its club members.

I / We have carefully read this agreement and the release of liability and fully understand its contents. I / We are aware that this release of liability is a contract between Magic Valley ATV Riders, Inc. (and its club members) and myself / us and I / we sign it of my / our own free will. My / our signature signifies that I / we have read and agree with this release.

The above and foregoing shall also apply to any minor child of mine accompanying me or participating in the events and activities above-described.

By signing this agreement, we agree to abide by all club bylaws and rules.

Signature: \_\_\_\_\_ Spouse: \_\_\_\_\_

Date: \_\_\_\_\_